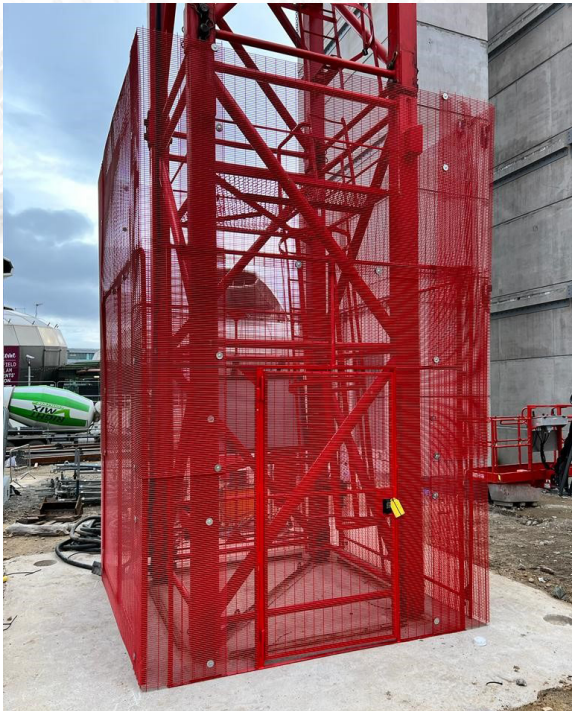


# BASE ENCLOSURE



Our Base Enclosures protect the base of a tower crane from trespassers and potential dangerous activities such as rooftopping and base jumping, ultimately reducing the likelihood of fatal injuries, site stoppages and negative press.

The caged perimeter utilises 358 anti-climb mesh surrounding the base of the tower crane, with an integral digi-lock which can be accessed with a combination code. Anti-tamper fixings are also installed for additional security.

Our system provides complete visibility at the base of the tower crane structure which is preferable for health and safety.

Supplied at a standard height of 3 metres, with varied heights available on request. A specialist installation service can be purchased at an additional cost.

Optional needle top fixings are also available as an additional climbing deterrent.

85001082



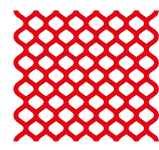
Additional security



Visibility



Anti-tamper fixings



358 anti-climb mesh

# ANTI-CLIMB PANELS



Our anti-climb panels can be installed for additional security while the tower crane is in use. Preventing trespassers from climbing the crane and reducing the likelihood of a fatal injury.

The anti-climb panels should be fitted to the outside of the mast to prevent anyone from climbing the structural steel member of the crane.

Each side of the crane will require a panel. The key benefit is that as the height of the building is being built the panel can be moved up.

80000296